

1. ANSWER THE FOLLOWING QUESTIONS IN YOUR OWN WORDS !

How do zoos protect endangered animals? _____

People who study animals are called _____

Why do zoos like to give children tours? _____

How are wild animals kept in zoos? _____

Lions and tigers are often kept in the same areas. Why? _____

How are visitors and animals separated? _____

How do zoos get their animals? _____

What do keepers do? _____

Why do zoos need a lot of money? _____

Why do zookeepers handle animals as little as possible? _____

When were the first zoos founded? _____

When did zoos become popular in Europe? _____

The oldest zoo in Europe is in _____

Who operates zoos? _____

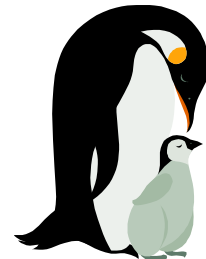
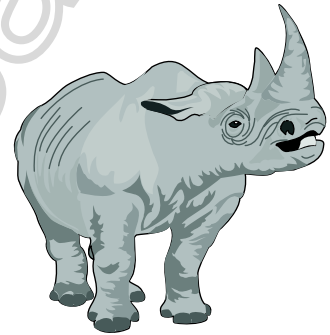
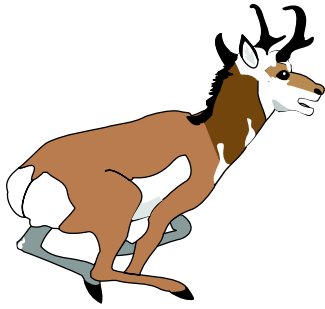
How do zoos get the money they need? _____

What does the curator of a zoo do? _____

2. MATCH THE WORDS WITH THE DEFINITIONS

A	tame		someone who cares for the animals
B	admission		large area covered with wild grass
C	cage		money that you give an organization in order to help them
D	donation		people who see that nothing dangerous happens
E	employee		to stay alive; keep on living
F	keeper		animal that drinks milk from its mother when it is young
G	menagerie		to train a wild animal not to attack you
H	security personnel		something that keeps people away from other things
I	supplement		big hole in the ground where animals are sometimes kept
J	barrier		the world around us
K	extinct		a group of wild animals kept privately or for the public to see
L	encounter		rare, not enough of something
M	grassland		very big
N	pit		you have to pay in order to get into a place
O	scarce		something that you add to food to make it better
P	survive		meet, come across
Q	research		someone who is the supervisor of a museum or zoo
R	mammal		structure made of steel in which animals are kept
S	environment		die out
T	curator		to do work in order to find out more about something
U	huge		a person who works for someone else

3. WRITE THE NAMES OF THE ANIMALS FROM THE BOX!



RHINOCEROS -KOALA- PANDA - TIGER- WALRUS -ANTELOPE -GIRAFFE -ZEBRA
-SNAKE - CROCODILE - BEAR - PENGUIN

